



CTC

Design Software Solutions

CTC Casework Configurator Content Installation Guide



**REVIT
EXPRESS
TOOLS**



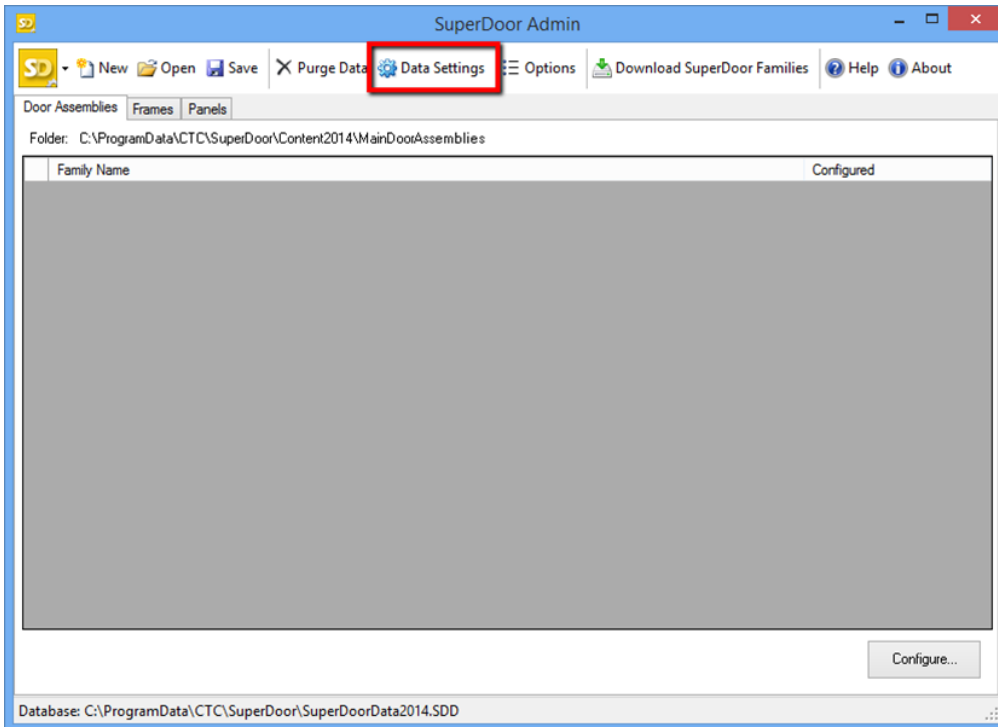
AUTODESK®
Gold Partner

Overview

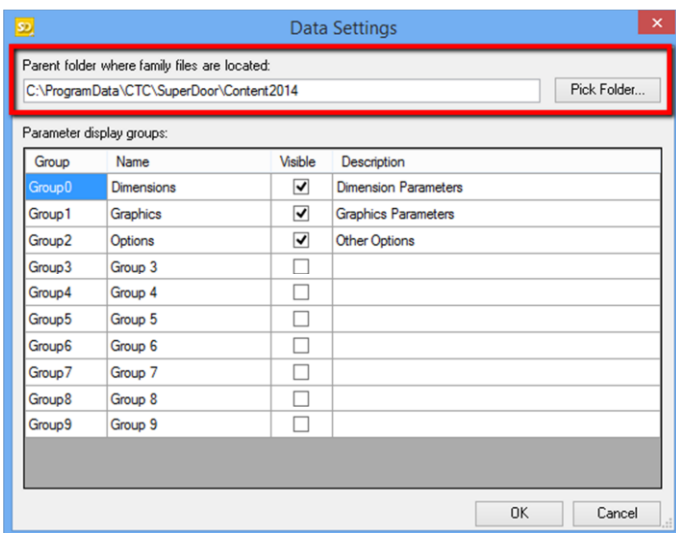
The content in this package is intended to be used with the CTC Casework Cconfigurator tool. It is assumed that the Casework Configurator Revit add-in has been installed and configured prior to downloading this content package.

Content Configuration

The content from the zip file must be copied into the folder location specified in the SuperDoor Admin tool. To set or check the folder location to be used, open the SuperDoor Admin tool and click the “Data Settings” button.

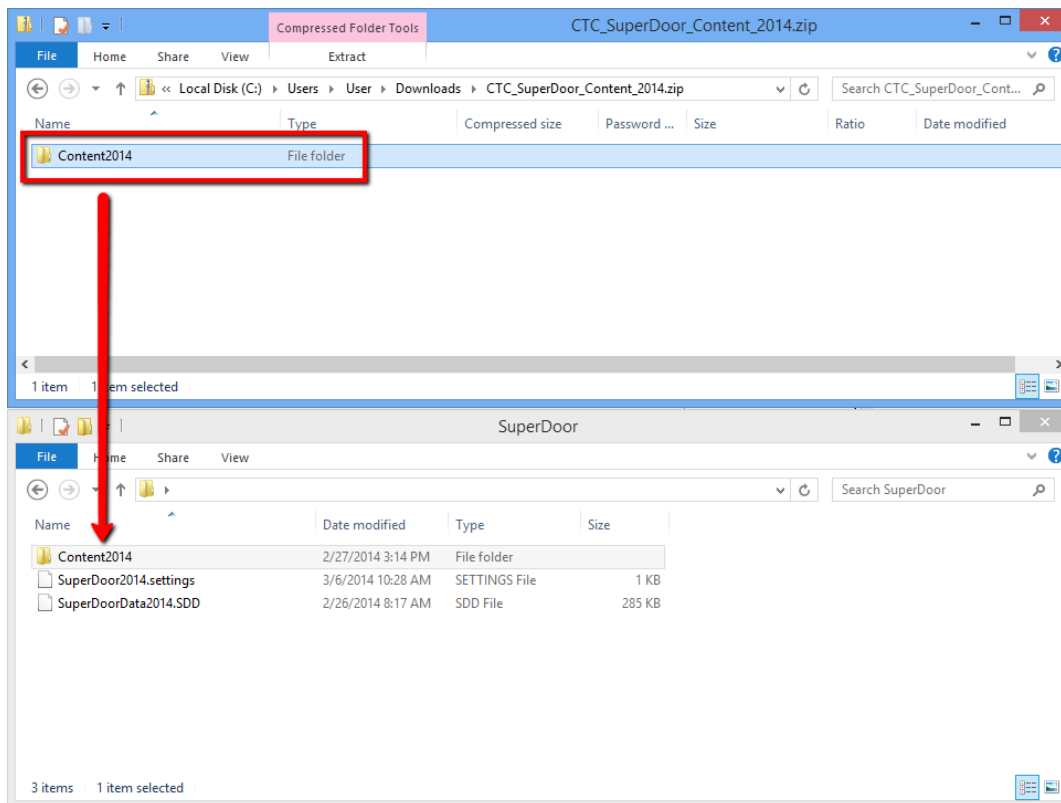


Set or note the path used here, the content folders in the zip file will need to be copied to this location.



Unzip and/or open the SuperDoor Content Zip file and copy the folder within.

Important: Do NOT change the names of the sub folders. Paste this folder into the location from the previous step.



Restart the SuperDoor admin tool. If deployed correctly each piece of content will be displayed on the appropriate tab.

